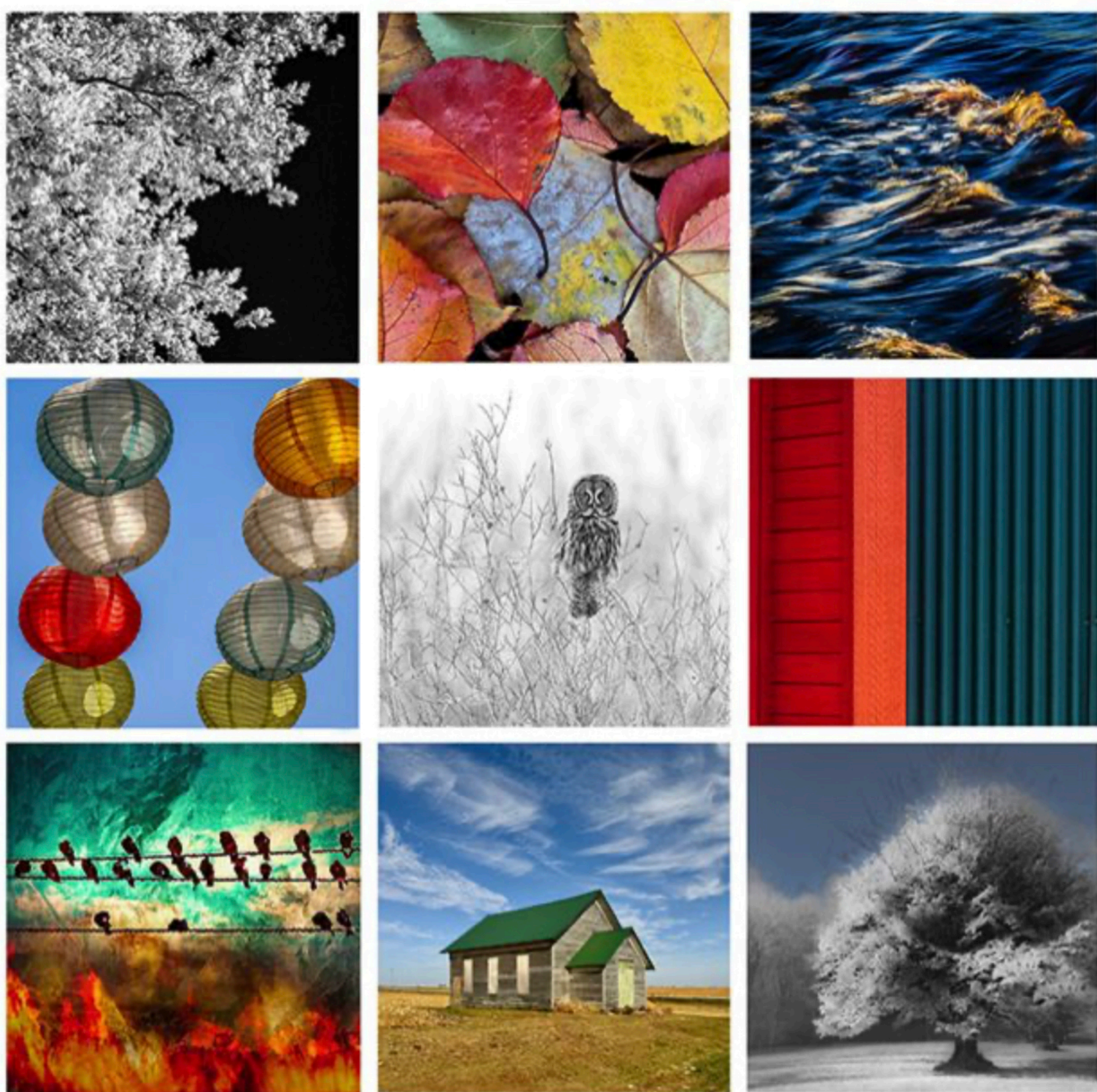


MIDWEST
CENTER
FOR
PHOTOGRAPHY



CALL FOR ENTRIES

17TH ANNUAL SMALL WORKS EXHIBITION - TEN X TEN

ENTRY DEADLINE: SEPTEMBER 1

EXHIBITION DATES: NOVEMBER 7 - DECEMBER 31, 2025

\$50 ENTRY FEE

SUBMIT 5 IMAGES FOR \$50,

\$5 FOR EACH ADDITIONAL IMAGE

CALL FOR ENTRIES TERMS AND CONDITIONS

INFORMATION AND ELIGIBILITY

Open to all photographers internationally. Open to all types of image capture; digital, film, iphone, etc.

The TEN X TEN show is an annual small works exhibition that celebrates the wide range of creative expression within the square photographic format, the interplay of images creating contrasts and similarities are exciting to experience in the unique juxtapositions of the grid format exhibition.

TEN X TEN focuses on offering affordable collectable works that are ten inches by ten inches in dimension, and sell for \$100 each.

Each photograph will be considered based upon the merit of individual images submitted by each artist. Theme based entries are not necessary, and a range of different images are preferred.

Selected artists will have their work featured in the exhibition and will be offered for sale online.

MWCP will be providing the printing for this exhibition at no cost to you. Prints will be framed in 10" X 10" frames rented by MWCP for a \$20 fee.

Support the shop small, shop local business model and participate in this exhibition.

ENTRY FORMAT

Select the number of images and click "add to cart". Check out at the PayPal form. There is not an upload form, but simply Email your photographs to info@mwcponline.org in jpeg format: 300 dpi, sized at 10" x 10", 3000 x 3000 pixels. Name each file with your name and the corresponding number from the entry information below, for example: smith_jane_1.jpg. List the information requested below in a single text document and include with your entry email to info@mwcponline.org.

PLEASE NOTE: It is important that the entry format is followed.

ENTRY INFORMATION REQUESTED

NAME

ADDRESS

CITY, STATE, COUNTRY

PHONE

EMAIL

WEBSITE (optional)

WHERE DID YOU HEAR ABOUT THE CALL FOR ENTRY (optional)

TITLE #1, #2, #3, #4, #5 etc...

YEAR

TYPE OF CAMERA USED

SALE PRICE \$100 EACH

NOTIFICATION OF SELECTED PHOTOGRAPHERS

Selected photographers will be posted online at www.mwcponline.com. Our group email will be sent with a list of names of selected photographers. Photographers who submitted must check this information for the list of names. Instructions for the exhibition will be sent to selected photographers via email.

INFORMATION FOR PARTICIPATING PHOTOGRAPHERS IN THE EXHIBITION

Photographers must submit high resolution (3000 X 3000 pixels) JPEG files in their entry and MWCP will print the selected images at exhibition quality for the TEN X TEN show at no cost to you. Prints will be exhibited in 10" X 10" frames rented by MWCP for a \$20 fee. After the close of the exhibition, photographers have the option to purchase the print, or the framed print at our standard service pricing and we will ship it to you. Remaining prints will be featured in the gallery flat files for sale for a period of one year. Photo copyright remains with the photographer at all times.

ASSOCIATED FEES AND INFORMATION

For the TEN X TEN small works show there will be a reduced gallery commission for work sold, reduced from 40% to 20%. In the event of a sale, the cost of the print and the frame will be given by MWCP to the sale. Not all photographers who enter the call for entries will be selected for the exhibition, and photographers who are selected may not have all entries chosen to be included in the exhibition. MWCP reserves the right to reproduce images for promotional and publication purposes, if necessary. Any work that is sub-standard quality will be disqualified from the exhibit. Entries must follow the requested format. MWCP cannot be responsible for damage or loss during shipping. Email addresses will be added to our email list. Entry fees are non-refundable, no exceptions. By submitting work to the call for entries you agree to all terms and conditions set forth in this entry page.

TO ENTER: PLEASE VISIT WWW.MWCPONLINE.COM